

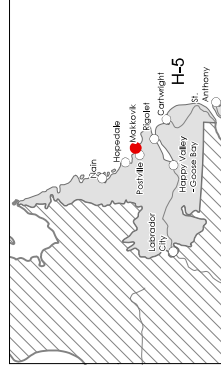
| DEPTH (m) | ELEVATION (m) | DESCRIPTION | STRATA PLOT | WATER LEVEL | SAMPLES | | | | OTHER TESTS | UNDRAINED SHEAR STRENGTH - kPa | | | | | | | | | | | | | | | |
|-----------|---------------|---|-------------|-------------|---------|--------|--------------------|--------------------|-------------|---|----|----|----|----|----|----|----|--|--|--|--|--|--|--|--|
| | | | | | TYPE | NUMBER | RECOVERY OR TCR(%) | N-VALUE OR RQD (%) | | WATER CONTENT & ATTERBERG LIMITS W_p W W_L | | | | | | | | | | | | | | | |
| | | | | | | | | | | DYNAMIC PENETRATION TEST, BLOWS/0.3m ★ STANDARD PENETRATION TEST, BLOWS/0.3m ● | | | | | | | | | | | | | | | |
| | | | | | | | mm | | | 10 | 20 | 30 | 40 | 50 | 60 | 70 | 80 | | | | | | | | |
| 0 | 32.87 | | | | | | | | | | | | | | | | | | | | | | | | |
| | 32.82 | ROOTMAT | | | | SS | 1 | 325 | 59/450 | | | | | | | | | | | | | | | | |
| 1 | 31.67 | Compact, brown, well-graded SAND with silt and gravel (SW-SM); occasional cobbles, dry | | | | | | | | | | | | | | | | | | | | | | | |
| 2 | | Compact to dense, brown, poorly graded SAND with silt (SP-SM); dry to wet | | | | SS | 2 | 375 | 35 | S | | | | | | | | | | | | | | | |
| 3 | | | | | | SS | 3 | 375 | 22 | | | | | | | | | | | | | | | | |
| 4 | 29.74 | Very dense, grey, silty SAND with gravel (SM); occasional cobbles, dry | | | | SS | 4 | | 162/350 | | | | | | | | | | | | | | | | |
| 5 | | | | | | SS | 5 | 0 | 50/0 | | | | | | | | | | | | | | | | |
| 6 | 26.47 | | | | | SS | 6 | 75 | 50/75 | | | | | | | | | | | | | | | | |
| 7 | | Fair to good, green to red, medium strong to strong, slightly weathered, Granitoid: BEDROCK | | | | HQ | 7 | 100% | 51% | | | | | | | | | | | | | | | | |
| 8 | | | | | | HQ | 8 | 100% | 75% | | | | | | | | | | | | | | | | |
| 9 | 23.55 | End of Borehole | | | | | | | | | | | | | | | | | | | | | | | |
| 10 | | Inferred groundwater level at 1.83 m depth | | | | | | | | | | | | | | | | | | | | | | | |
| 11 | | | | | | | | | | | | | | | | | | | | | | | | | |
| 12 | | | | | | | | | | | | | | | | | | | | | | | | | |
| 13 | | | | | | | | | | | | | | | | | | | | | | | | | |
| 14 | | | | | | | | | | | | | | | | | | | | | | | | | |

△ Unconfined Compression Test
 □ Field Vane Test ■ (Remolded)
 ◇ Fall Cone Test ◆ (Remolded)
 ∇ Hand Penetrometer Test ▣ Torvane

- Legend**
- Borehole
 - Exposed Bedrock
 - Test Pit



Notes
 1. Coordinate System: NAD 1983 UTM Zone 21N
 2. Satellite Imagery provided by (C) Plover 2017.
 Date of Imagery is August 4, 2016

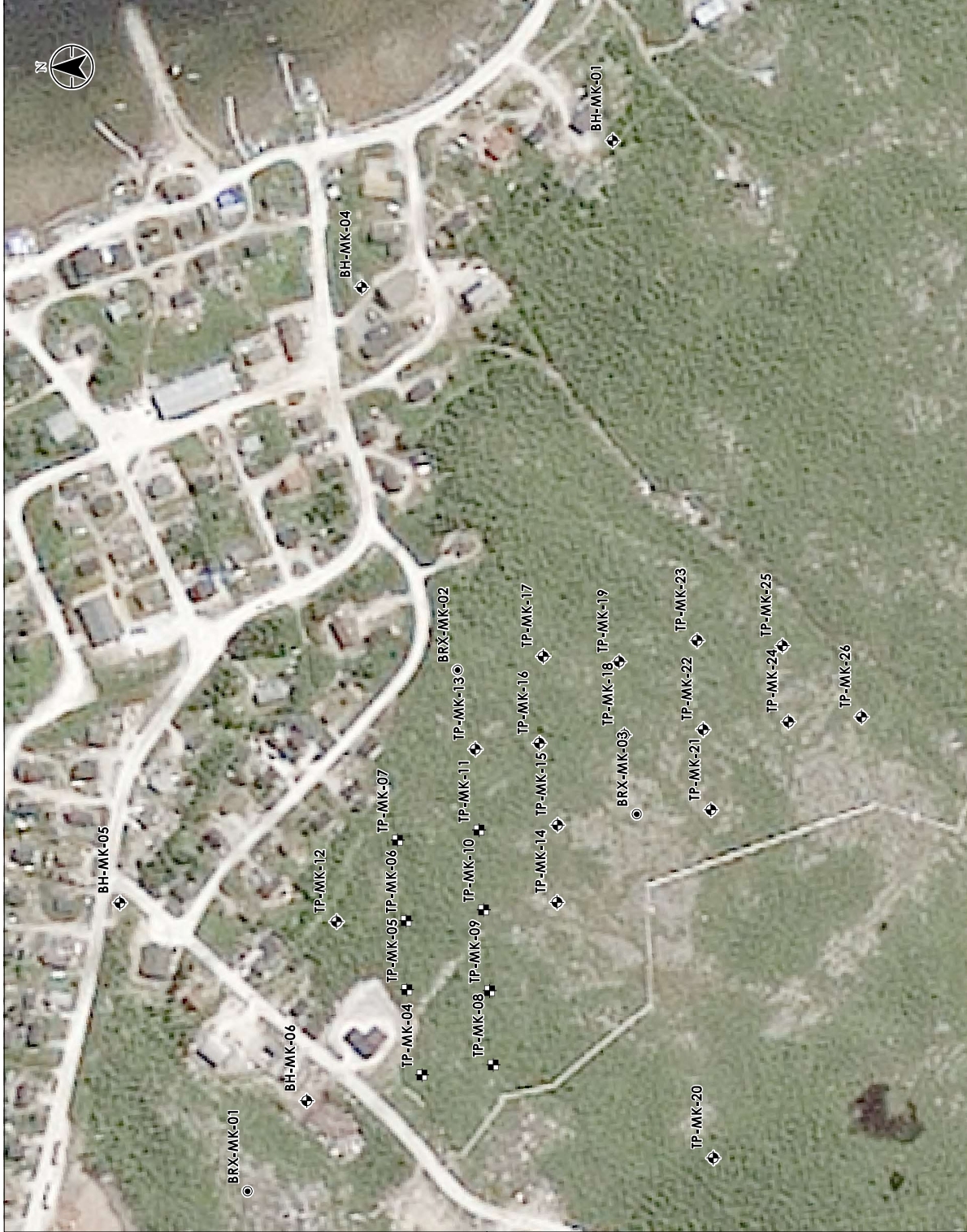


Project location
 121.0 9497.010 BEVA
 Prepared by H9 on 2017-04-28
 Technical Review by S8 on 2017-04-28
 Independent Review by S2 on 2017-04-28

Client/Project
 Nunatsiavut Government
 Geotechnical Investigation,
 Makkovik Community Site Assessment

Figure No.
H-5

Title
Test Hole Locations Area 2 -South of the Community



Disclaimer: Client assumes no responsibility for data furnished in electronic format. The recipient accepts full responsibility for verifying the accuracy and completeness of the data. The recipient releases Stantec, its officers, employees, consultants and agents from any liability from the content or omission of the data.